



Information Sheet No. TFD-2021-11

NON-FIRE RATED METAL DOOR FRAMES

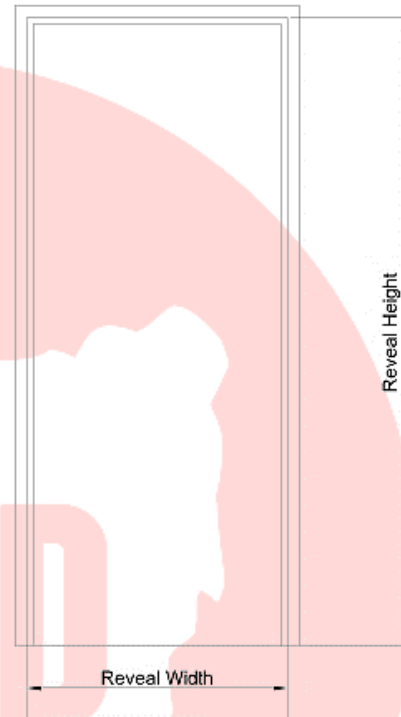
Assembled and Knock-Down Frames

Standard Reveal Sizes

Standard Height: 2055

General

1. Made from 1.2mm Zinceanneal
2. 3 @ Backplated to suit 100x75mm screw fix hinges
3. A universal stainless steel striker plate positioned at standard location
4. One pair of rubber buffers fitted to the lock stile
5. Removable spreader bars
6. Ramset plates to each stile
7. Ten galvanised wire ties



Available Extras

- Additional hinges
- Custom size to suit opening
- Preparation for special lock / strike
- Preparation for non-standard lock height
- Reinforced for surface mounted closers or preparation for concealed closers
- Preparation for screw fixed hinges
- Tube fixing for bolting of frames to existing walls
- Special frames hot dipped / galvanised material / stainless steel to suit requirements, 1mm to 3mm

Standard Widths:

SINGLES	PAIRS	SLIDERS
624		690
724	1446	740
774	1546	790
824	1646	
874		
924		

Handing





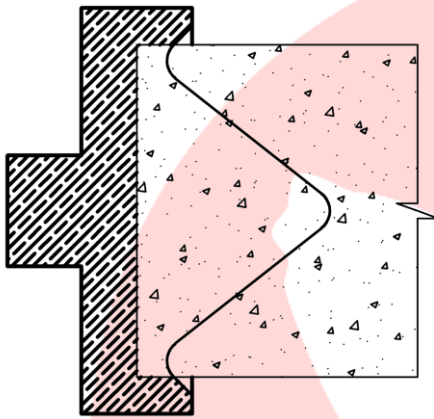
METAL DOOR FRAMES

Frame fixing details for masonry walls

Brick ties

Standard fixing

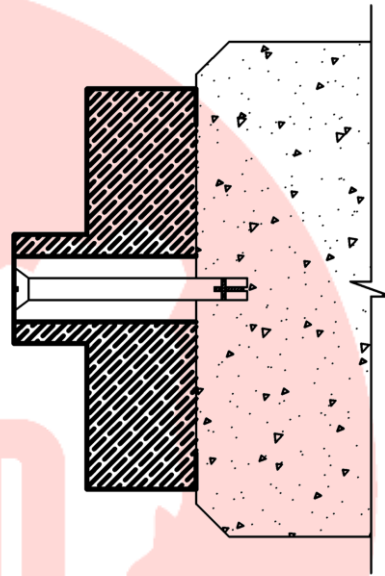
Brick and block walls



Counter sunk / retro fit

Dynabolt tubespacers spacers

Timber or concrete walls and retrofit installation

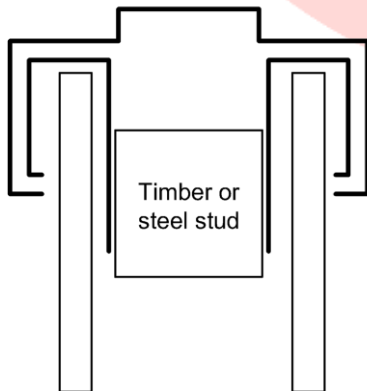


Standard door frames for dry walls

Standard frame with stud clip fixing

Suitable for use only in non-rated partition walls

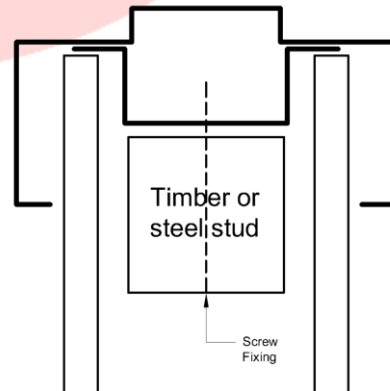
Steel or timber studs may be used



Standard frame quick fix

Suitable for use only in non-rated partition walls

Steel or timber studs may be used





METAL DOOR FRAMES

Stud clip fixing

This is a method of fixing standard roll formed masonry frames into dry wall applications

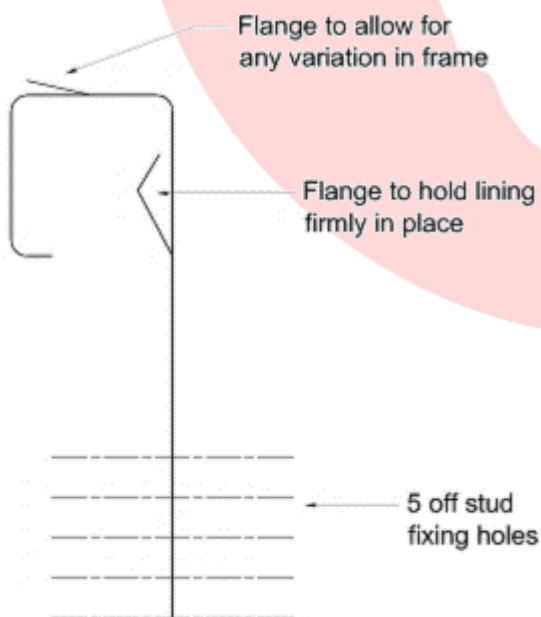
Suitable for use only in non-rated plasterboard partition walls

Steel or timber studs may be used

Frame throat size should be the same as the overall width of the wall.

Stud clips are available to suit linings of:

- 32mm
- 26mm
- 16mm
- 13mm
- 10mm
- 6mm
- 0mm



For further information on non-fire rated metal door frames, please [contact Tasmanian Fire Doors](mailto:info@tasmanianfiredoors.com.au)